

SITE SANTA FE

SITE SANTA FE PRESENTS A NEW SOLO EXHIBITION BY JEFFREY GIBSON

THE BODY ELECTRIC

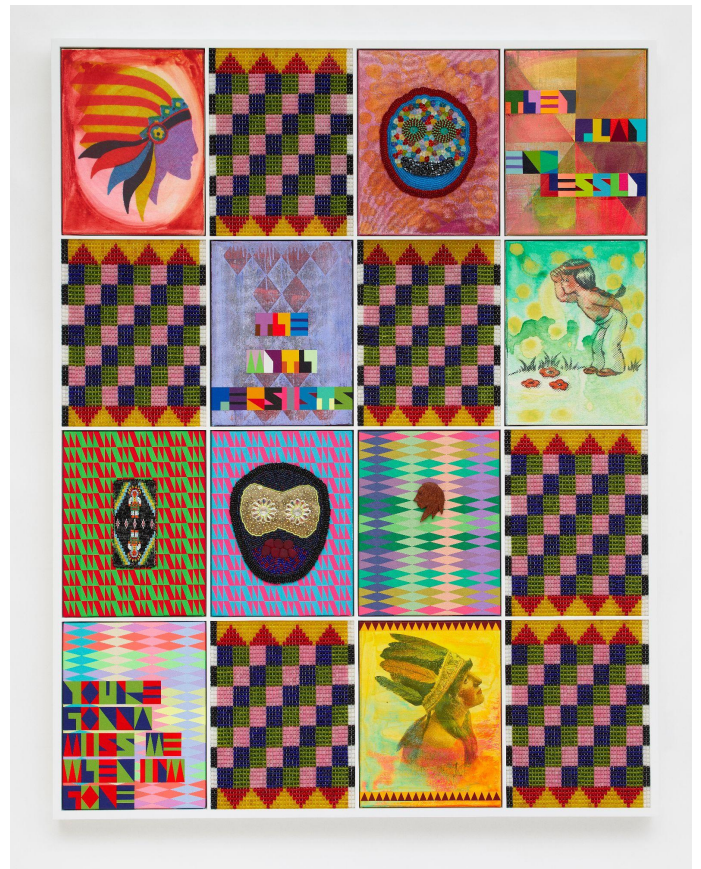
May 6, 2022-September 11, 2022

Media Preview: Friday, May 6, 2022, 10:00 AM

Opening Weekend Events: May 6-8, 2022

(Santa Fe, NM, March 7, 2022) – SITE Santa Fe is pleased to present a new solo exhibition by Jeffrey Gibson: *The Body Electric*, from May 6, 2022, through September 11, 2022. This exhibition is a comprehensive survey of Gibson's multi-decade practice highlighting his purposeful use of material, provocative language, and collaborative community-rooted performances.

"*The Body Electric*, offers a selection of recent works, expressing a deep appreciation of the Earth and kinship with the natural world. Gibson calls attention to 'outsider-ness' through a celebration of nonconformity and the power of self-expression. Over the course of this four-month exhibition, SITE Santa Fe will offer a wide range of public programs and community collaborations, including a film series curated by Jeffery Gibson and a live performance of *She Never Dances Alone* by Sarah Ortegon," says curator Brandee Caoba.



The Body Electric features a selection of paintings, sculptures, commissioned community-engaged performances, and video installations, as well as a newly commissioned mural, *THE LAND IS SPEAKING ARE YOU LISTENING* (2022), activating SITE Santa Fe's front lobby and main galleries. Viewed together, the body of work presented in this exhibition encourages contemplation of representation, exclusion, and belonging.

"I have been researching Indigenous kinship and relationality philosophies in response to the chaos of the past few years of the pandemic, political divisiveness, ongoing environmental disasters, racially motivated violence and trauma, and the amplifying of voices that are demanding change. I have sought to find ways to continue to have empathy for different perspectives and these kinship and relationality philosophies have provided me some important ways to move forward." – Jeffrey Gibson

The Body Electric is curated by Brandee Caoba.

About the Artist

Jeffrey Gibson is a celebrated multidisciplinary artist whose works are represented in over 20 permanent collections across the U.S. He is a member of the Mississippi Band of Choctaw Indians and half Cherokee.

A recipient of numerous awards, Gibson received the Premier Artists in the 2021 Art Basel Conversation Series, the MacArthur Foundation Fellowship in 2019, the Joan Mitchell Foundation Painters & Sculptors Award in 2015, and a Creative Capital Foundation Grant in 2005. He has exhibited his works in the Brooklyn Art Museum of Art, New York; Kavi Gupta, Chicago; Times Square Arts, New York; Blanton Museum of Art, Austin; among others.



Thank you

The Body Electric is made possible through the generous support of the Carl & Marilyn Thoma Foundation.

The Carl & Marilyn Thoma Foundation recognizes the power of the arts to challenge and shift perceptions, spark creativity, and connect people across cultures.



Support for *The Body Electric* is generously provided by contributors to the SITE Santa Fe Exhibition Fund.

Additional funding is provided by the City of Santa Fe Arts and Culture Department and the 1% Lodgers' Tax.

Image Credits

Jeffrey Gibson, *THEY PLAY ENDLESSLY*, 2021

Canvas, acrylic paint, vintage beaded wallet, vintage wooden brooch, archival pigment print on rice paper, glass beads, artificial sinew, hematite beads, plastic beads, druzy beads, metal sequins, turquoise beads, nylon thread; 66 ½ x 50 ½ x 3 ¼ in.

Jeffrey Gibson, *Firebelly*, 2021

Glass beads, acrylic felt, polyester fiber, fill, artificial sinew, nylon thread, vintage beaded elements (glass beads, suede, cotton thread); 16 x 23 x 13 ¼ in.

All images courtesy of the artist and Kavi Gupta, Photographer: John Lusi

About SITE Santa Fe

SITE Santa Fe nurtures innovation, discovery, and inspiration through the art of today. Founded in 1995 to establish the first international contemporary art biennial in the United States, SITE Santa Fe is a non-collecting art institution committed to supporting new developments in contemporary art, encouraging artistic exploration, and expanding traditional museum experiences. Since its launch, SITE Santa Fe has presented 11 international biennials, more than 90 contemporary art exhibitions, and works by hundreds of emerging and established artists from around the world and right here in New Mexico. SITE Santa Fe also presents a wide range of public and educational programs that include conversations with artists and curators, performances, film screenings, concerts, hands-on workshops, and collaborations with dozens of local schools and community organizations.

VISUALS AVAILABLE

FURTHER INFORMATION ON SITE SANTA FE CAN BE FOUND AT [SITESANTAFE.ORG](https://sitesantafe.org)

FOLLOW SITE SANTA FE ON [FACEBOOK](#), [TWITTER](#), AND [INSTAGRAM](#)

Media Contact: Carolina Franco
Public Relations and Advertising Manager, SITE Santa Fe
T: +1 (505) 989-1199 x 12 | E: franco@sitesantafe.org